

# Water meter

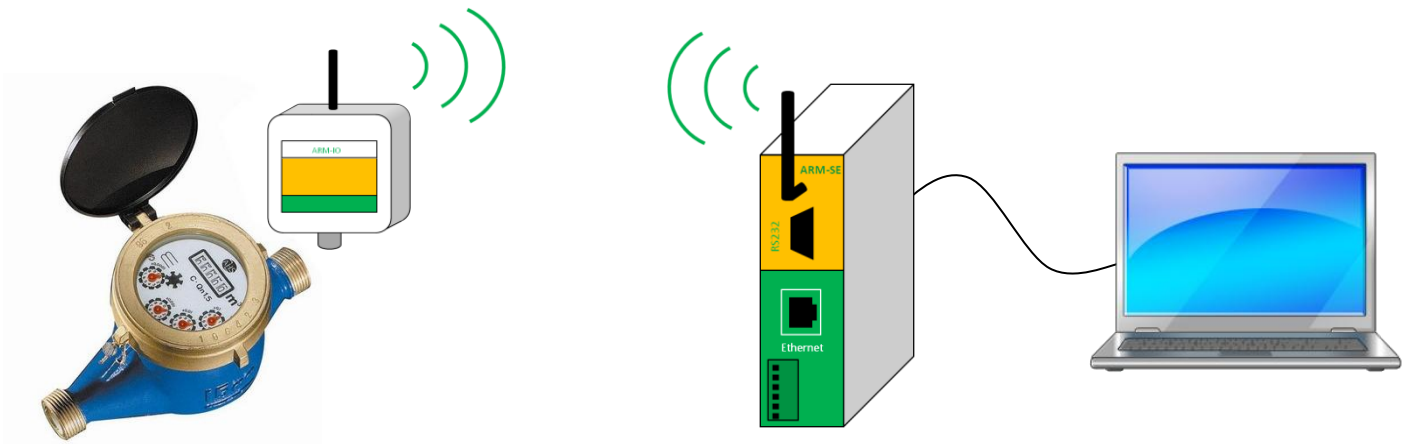


## Objectives:

- Interrogate a water meter to a distance

## Products:

- ARM-SE
- ARM-IOD-LP



## Application:

The water meters are often situated in difficult access places, with no electricity. Our modem ARM-IOD-LP is perfectly made for this kind of application. It counts the impulses transmitted by the meter and stock it before sending it to the PC via an ARM-SE to a configurable frequency. In this way, the ARM-SE can dialog with 256 water meters.

**Configuration:**

The ARM-IOD-LP can be configured in the manufactory or with a Modbus software. The ARM-SE must be configured via its embedded web pages.

The installation works on the master/slave principle in Modbus mode. The ARM-SE is connected to the PC via the Ethernet or RS232 port. It must be configured in the mode Gateway Modbus TCP/Modbus RTU.

The ARM-IOD-LP must be configured in Modbus slave mode, connected to the meter with a digital output (0V or power supply voltage).

Two types of configuration are possible:

- The ARM-SE interrogates, in star mode to a specific frequency, each of its ARM-IOD-LP slaves, which “wake up” to the sent request and read the counting value in the register
- The ARM-IOD-LP is “awake” by an alert and transmits it to the ARM-SE which must be equipped with a specific software (in option).